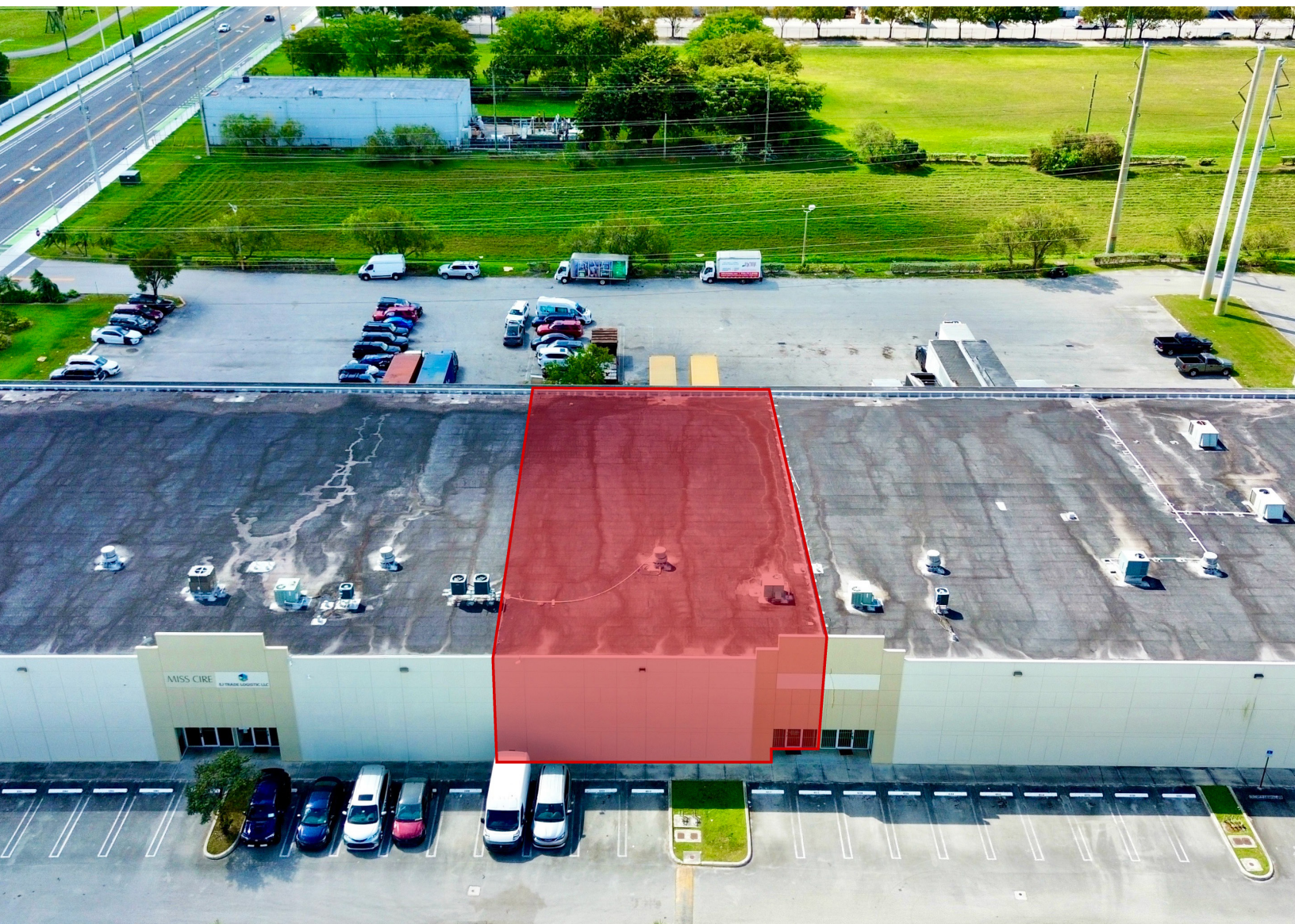




6312

NW 97th Avenue
Doral, FL 33178



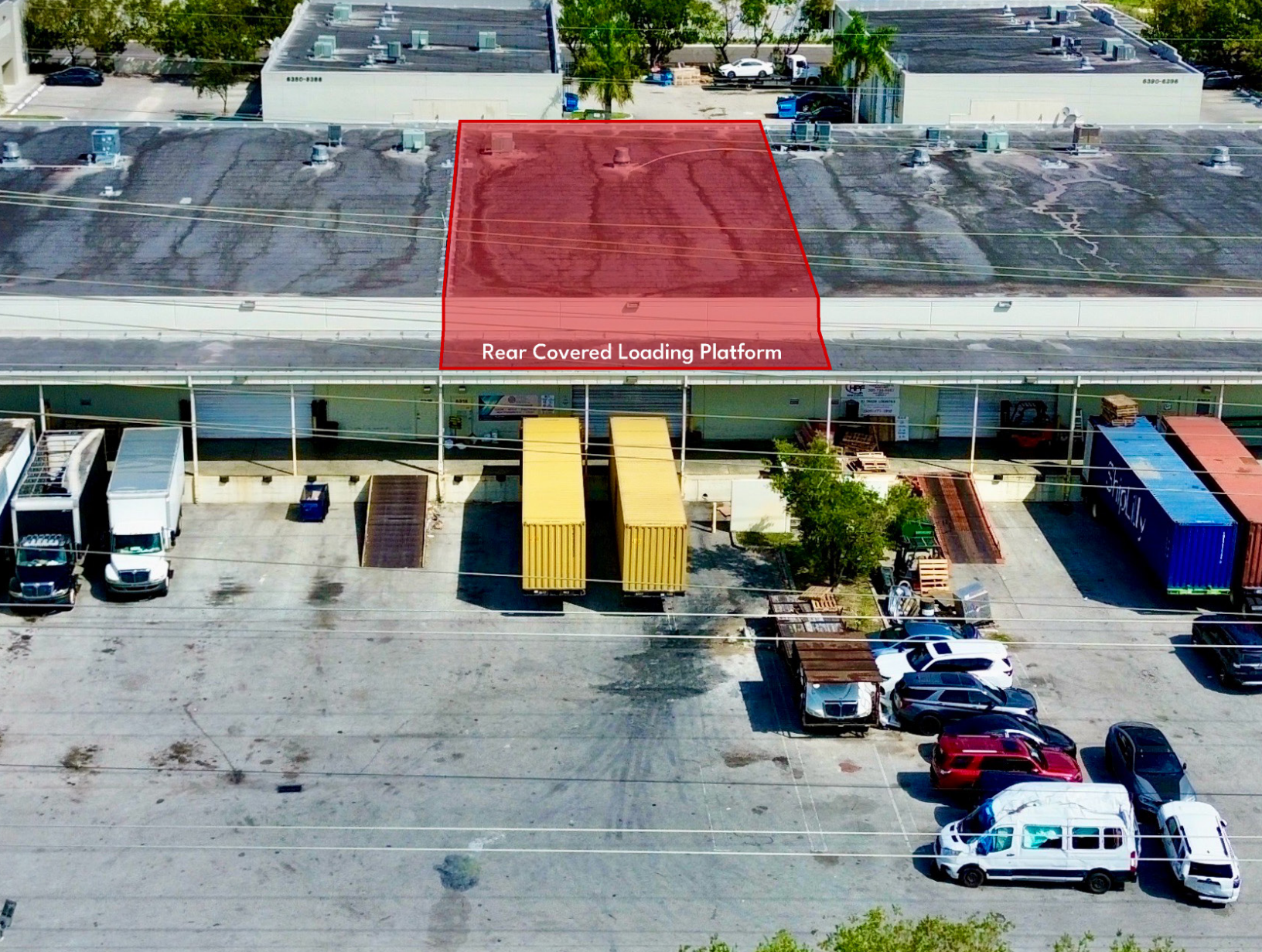
WAREHOUSE AVAILABLE FOR LEASE

+/- 4,375 SF – 8,750 SF with up to +/- 900 SF of Office
Located Inside Flightway Commerce Park

Edison Vasquez, SIOR, CCIM

evasquez@comreal.com

305-401-1085



Rear Covered Loading Platform

PROPERTY OVERVIEW

- +/- 4,375 - 8,750 Sq. Ft. total available
- +/- 900 Sq. Ft. of office
- **Dock loading** with large truckcourt area
- Rear covered loading platform
- **20' clear** ceiling height
- Great parking & outside storage
- Ideal for distribution or storage space
- Located in the heart of Doral with easy access to all highways