

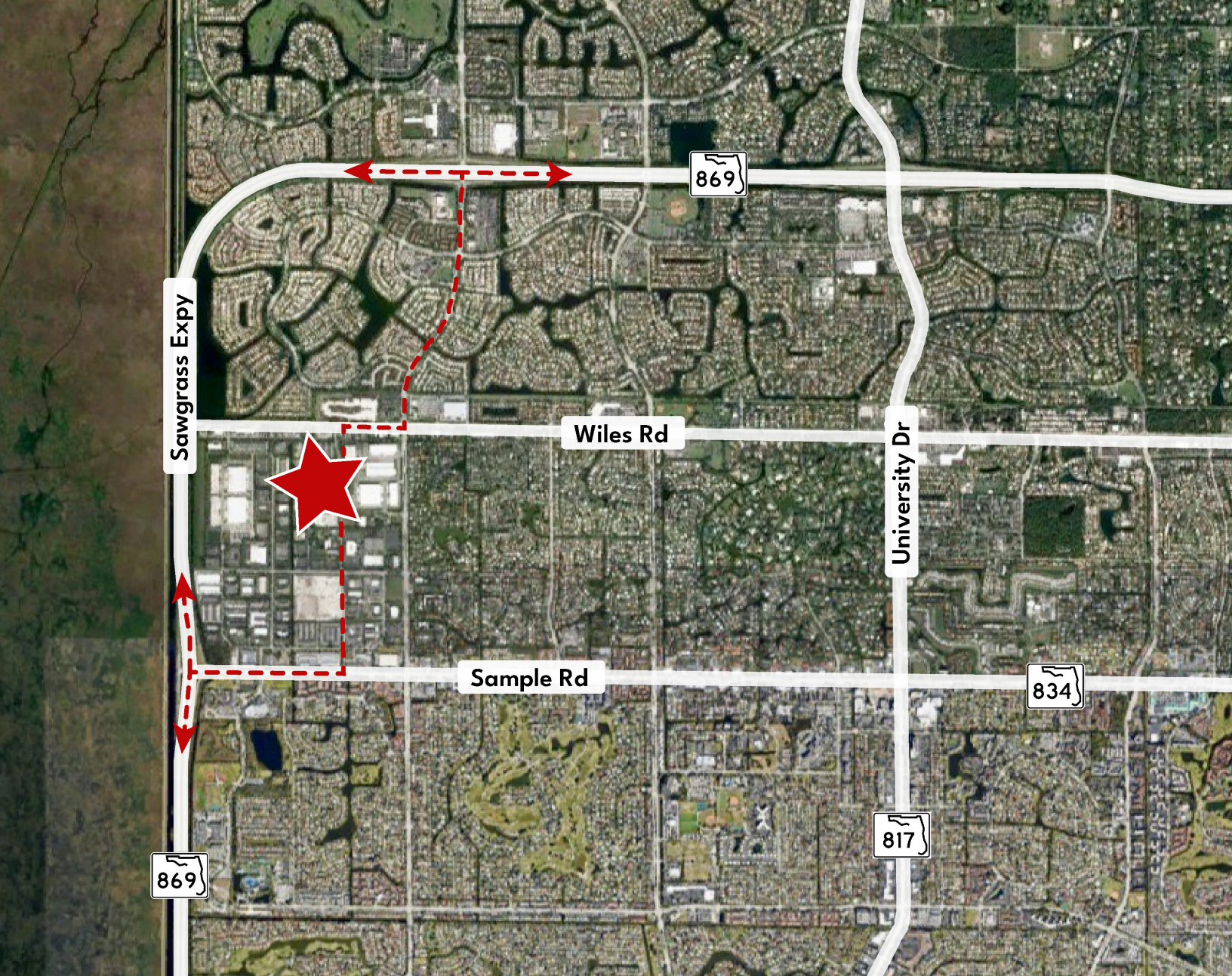
CORAL SPRINGS OUTDOOR STORAGE AVAILABLE

+/- 4.89 AC Total

Fully fenced and secured

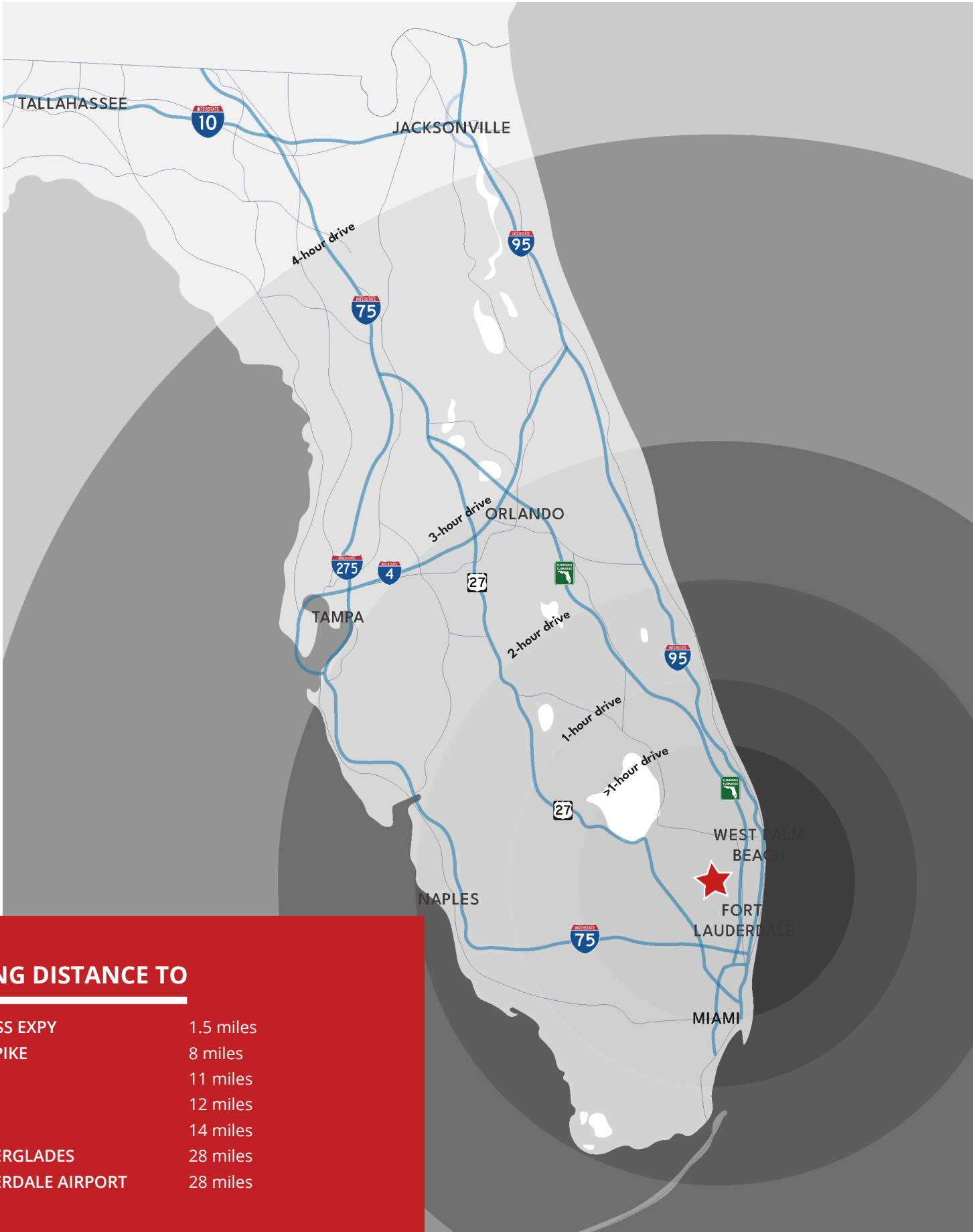
Pat McBride, Esq.
pmcbride@comreal.com
(305) 619-2937

Chris Spear, SIOR, CCIM
cspear@comreal.com
(305) 807-7662



PROPERTY --- OVERVIEW

- +/- 4.89 Acres Total
- IRD, City of Coral Springs Zoning
- Approved for outdoor storage use
- Fully fenced and secured
- Guard shack on site
- Convenient access to Sawgrass Expressway
- Lease Rate: Inquire



DRIVING DISTANCE TO

SAWGRASS EXPY	1.5 miles
FL TURNPIKE	8 miles
I 95	11 miles
I 75	12 miles
I 595	14 miles
PORT EVERGLADES	28 miles
FT LAUDERDALE AIRPORT	28 miles



For Inquiries, Contact:

Pat McBride, Esq.
pmcbride@comreal.com
(305) 619-2937

Chris Spear, SIOR, CCIM
cspear@comreal.com
(305) 807-7662

ComReal Miami - Doral, LLC
3470 NW 82nd Ave, Suite 605
Doral, FL 33122

Disclosure: All information provided herein is obtained from sources that we believe to be reliable, but has not been verified for accuracy or completeness. Any reliance on this information is solely at your own risk. Terms and conditions or change in price are subject to change without notice.