



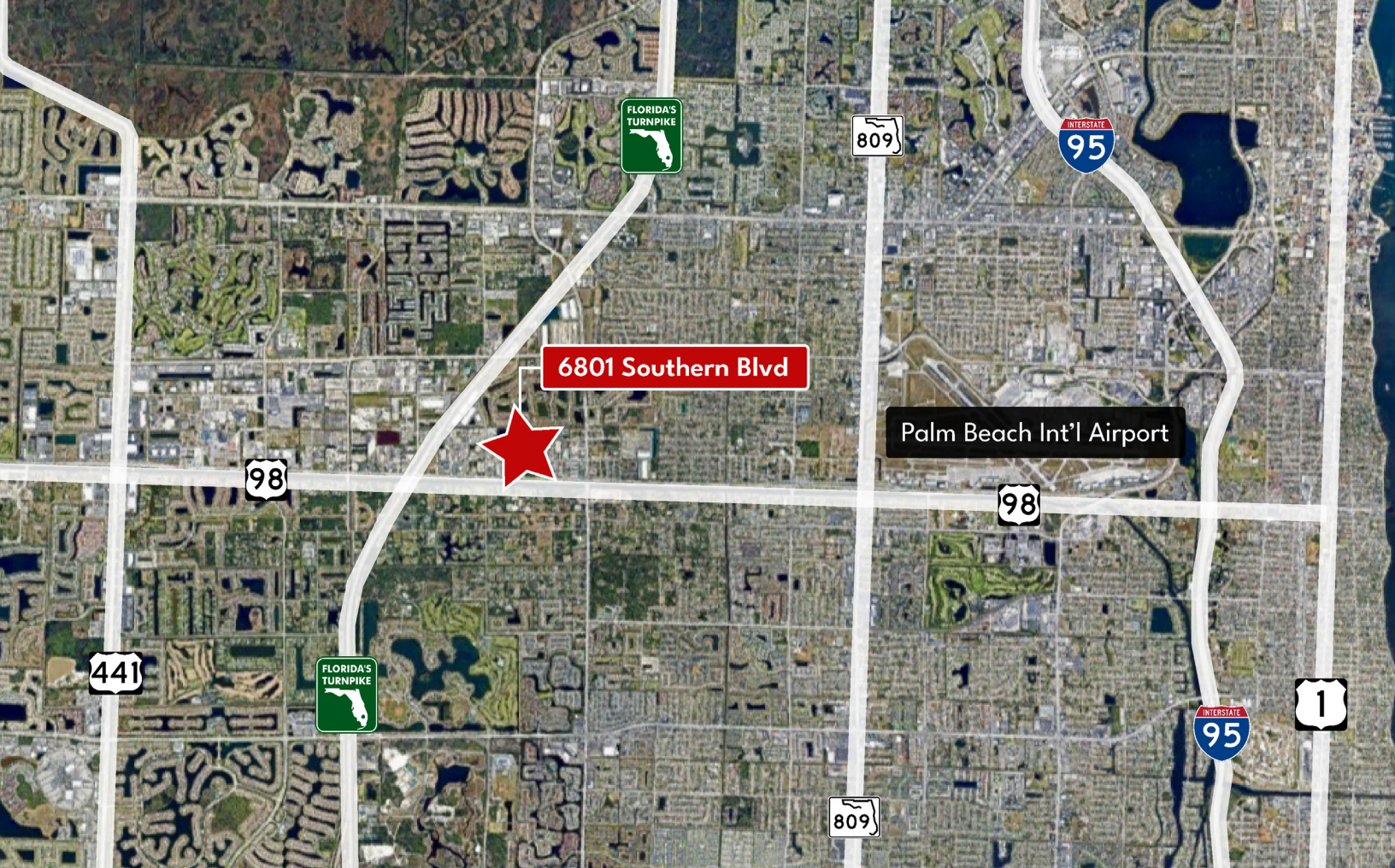
## SOUTHERN BLVD OUTDOOR STORAGE

**+/- 3 GROSS ACRES**

Available for Lease

**Pat McBride, Esq.**  
pmcbride@comreal.com  
305-619-2937

**Chris Spear, SIOR, CCIM**  
cspear@comreal.com  
(305) 807-7662



## PROPERTY OVERVIEW

- 3 gross acres
- 165' of frontage on Southern Boulevard
- Access via Southern Boulevard & Wallis Road
- Industrial Land (IL) Zoning, Palm Beach
- Fully fenced and secure
- Inquire for Lease Rate

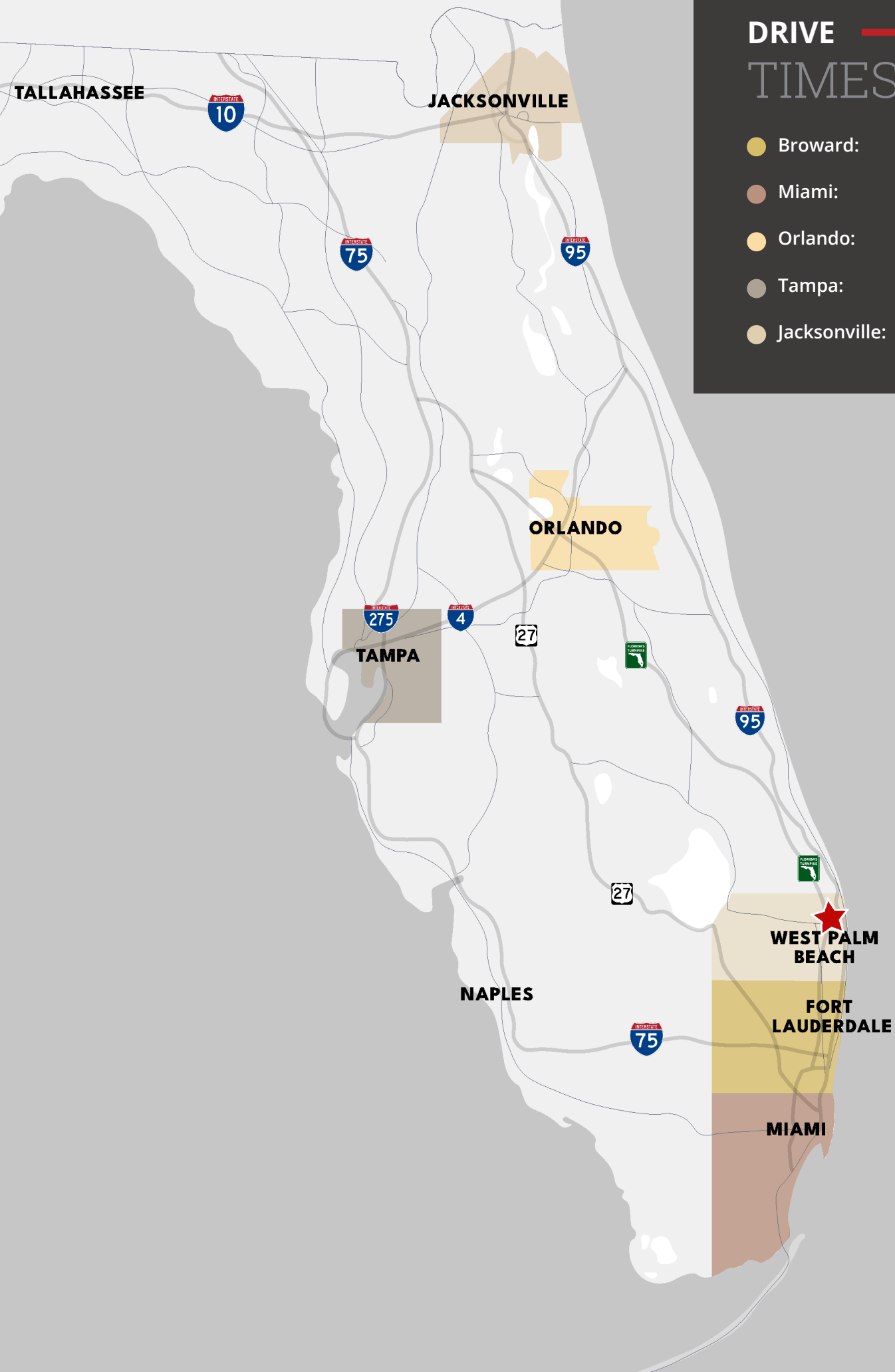
## PROPERTY LOCATION

### DISTANCE TO:

- |                             |          |
|-----------------------------|----------|
| - Southern Blvd:            | Frontage |
| - Florida's Turnpike:       | < 1 mile |
| - 441 (SR 7):               | 3 miles  |
| - Palm Beach International: | 6 miles  |
| - Port of Palm Beach:       | 14 miles |

# DRIVE — TIMES

- Broward: < 1 hour
- Miami: 1 hour
- Orlando: 2 hours
- Tampa: 3 hours
- Jacksonville: 4 hours





For Leasing Inquiries, Contact:

**Pat McBride, Esq.**  
pmcbride@comreal.com  
(305) 619-2937

**Chris Spear, SIOR, CCIM**  
cspear@comreal.com  
(305) 807-7662

**ComReal Miami - Doral, LLC**  
3470 NW 82nd Ave, Suite 605  
Doral, FL 33122

*Disclosure: All information provided herein is obtained from sources that we believe to be reliable, but has not been verified for accuracy or completeness. Any reliance on this information is solely at your own risk. Terms and conditions or change in price are subject to change without notice.*