

# Americas' Gateway Park Building

## Available for Sale



---

Property Address:  
1800 NW 89th Place  
Doral, FL 33172

---

Available:  
+/- 106,046 Sq. Ft.  
on +/- 5.88 Acres

---

Property Website:  
[www.doral-building.com](http://www.doral-building.com)





# Property Summary

---

## Property Description

ComReal is proud to present Doral's premier freestanding industrial and office headquarters building. This top-rated asset offers a rare opportunity for a single user or investor to command **106,046 SF facility** situated on an expansive **5.88 acre site**. Designed to appeal, the main lobby entrance features a signature indoor fountain and a stunning glass atrium, establishing an immediate sense of corporate prestige.

Engineered for high-performance users, the building's infrastructure is tailored for industries requiring 100% uptime and high-density staffing, **such as medical, government, education, aviation, or pharmaceutical sectors**.

**Abundant Power:** Equipped with a full backup generator to ensure uninterrupted operations.

**High-Density Parking:** 207 dedicated spaces, an exceptional ratio for industrial assets, accommodate large-scale office or warehouse workforces.

**Lifestyle Integration:** Multiple terraces and executive offices provide spectacular 180-degree views of the Fingerlakes, creating a world-class environment for employee retention.

**Unique Asset in a Restricted Market:** In a market defined by near-zero vacancy for specialized assets of this caliber, the Americas' Gateway Park Building stands as a true "trophy" acquisition. It is a rare find for the Doral market, representing the only available building of this size currently offered for sale.

**Unmatched Versatility & Connectivity:** Currently configured as a Refrigeration Ready facility with extensive cooler space, the building can also serve as high-quality Dry Space to suit logistics, aviation, or e-commerce requirements

**Superior Connectivity:** Strategically located minutes from Miami International Airport with immediate access to the Florida Turnpike, Dolphin Expressway (SR 836), and Palmetto Expressway (SR 826).





# Property Details

- Address:** 1800 NW 89th Place, Doral, FL 33172
- Folio:** 35-30-33-0270-010
- Building:** +/- 106,046 Sq. Ft. total size with +/- 74,530 Sq. Ft. warehouse, +/- 31,516SF office, on 3 floors, with elevator.
- Year Built:** 1990
- Land Size:** 5.88 acres
- Loading:** 22 dock positions plus 2 concrete ramps. Each dock has a pit leveler.
- Clear Height:** 20' clear refrigerated area. 22' clear dry
- Parking:** 207 Spaces
- Sprinklers:** Fully sprinklered
- Zoning:** "I" - Industrial as defined by the City of Doral
- Property Taxes:** \$262,034.82 for 2025 property taxes
- Utilities:** Electrical service provided by Florida Power & Light. There is 3-phase power with over 1,000 amps now available. Water and sewer is provided by Miami-Dade County.

Unmatchable lake views of Fingerlakes

*This property is available for Sale or Lease to accommodate long-term investment strategies.*



Main Building Entrance



Covered Loading Area



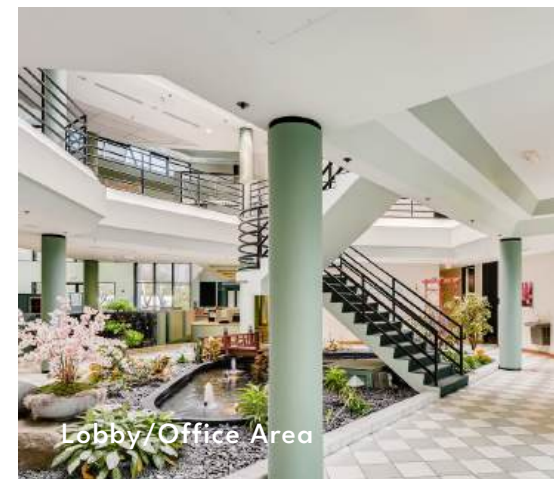
Refrigerated Loading Area



Fully Racked Warehouse

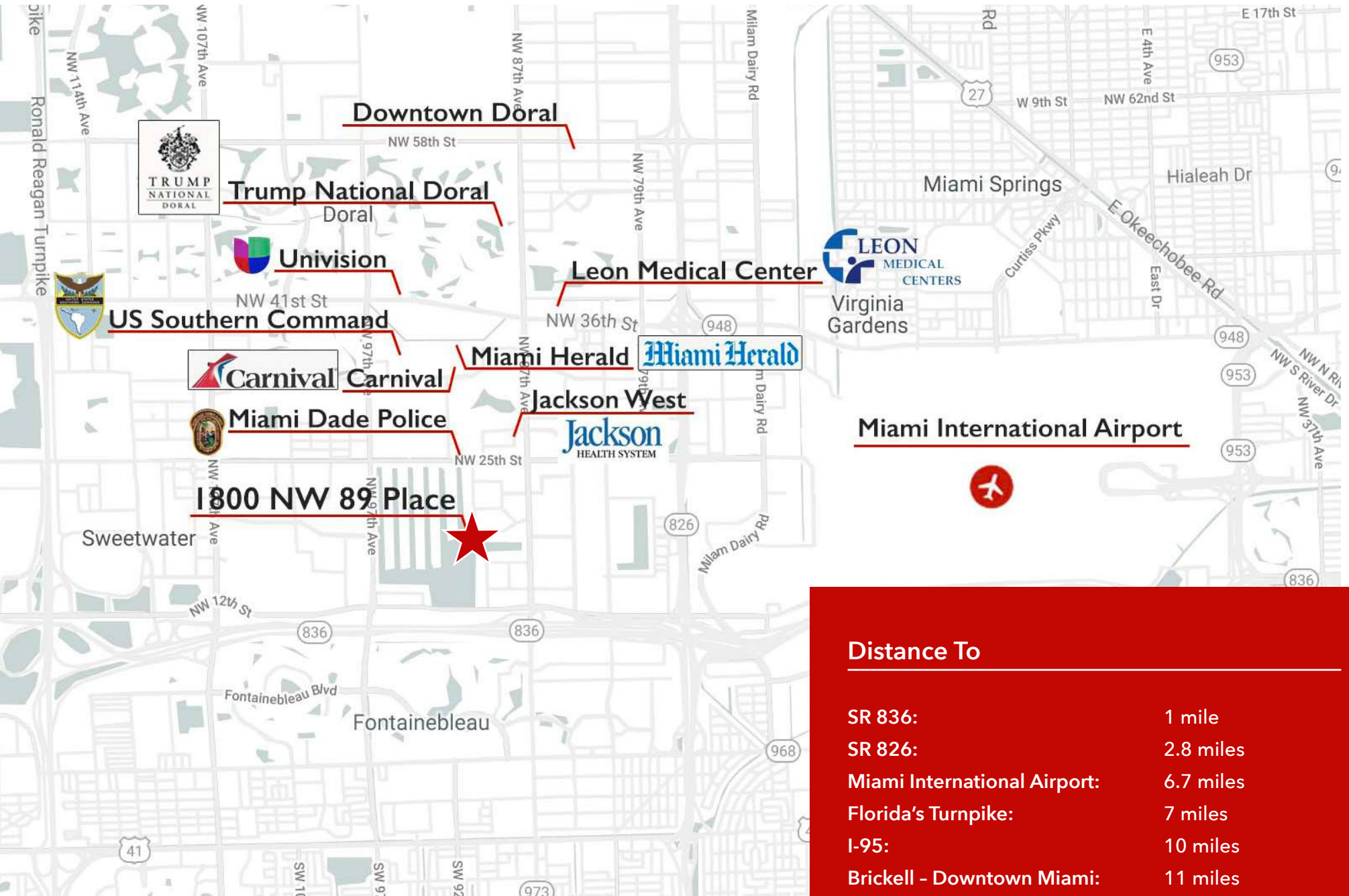


Terrace Overlooking Fingerlakes



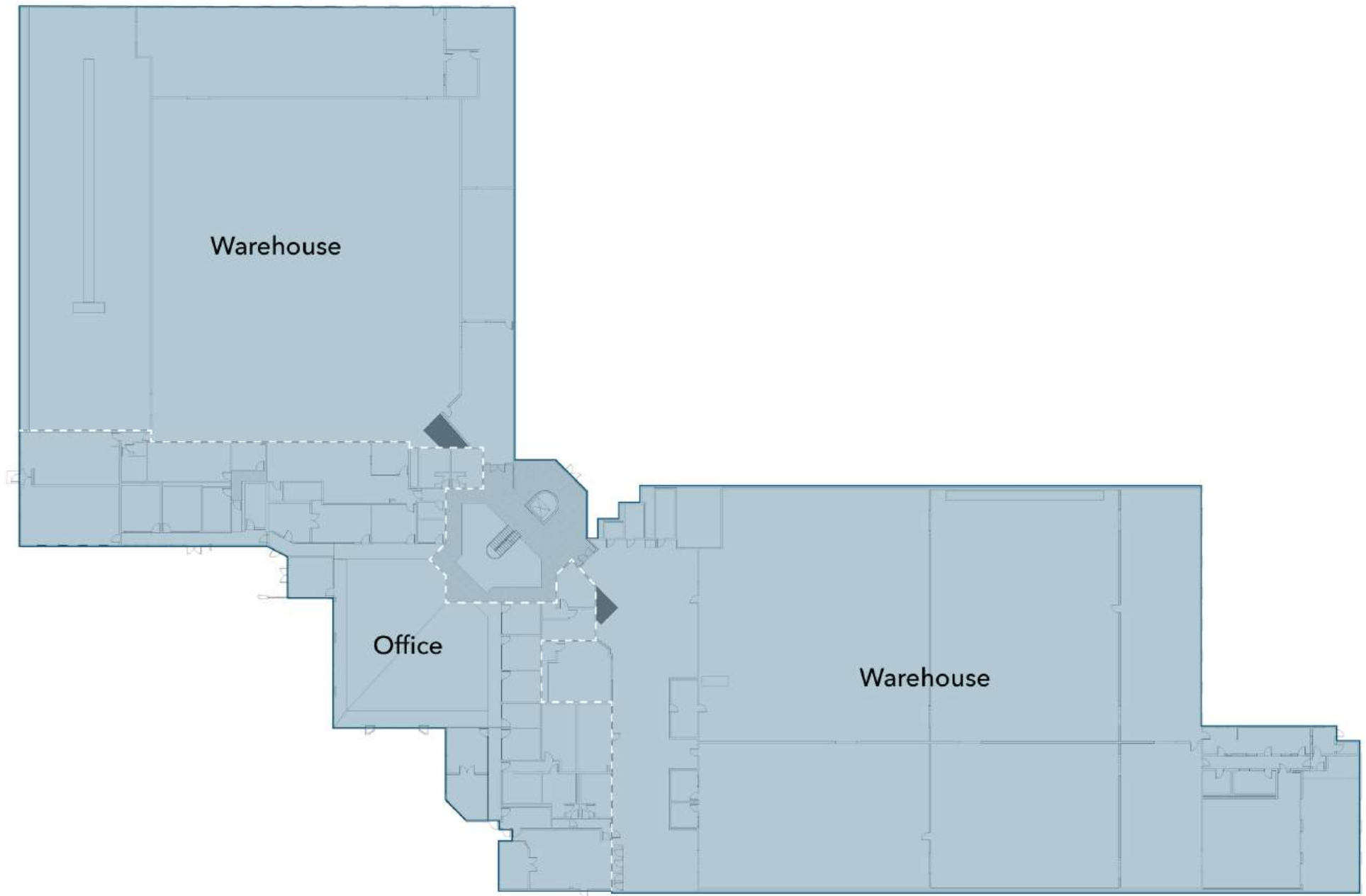
Lobby/Office Area

# Property Map



# Property Floor Plan

---





# Americas' Gateway Park Building

## Available for Sale

[www.doral-building.com](http://www.doral-building.com)

### Contact:

**Edison Vasquez, SIOR, CCIM**

305-401-1085 // [evasquez@comreal.com](mailto:evasquez@comreal.com)

**Chris Spear, SIOR, CCIM**

305-807-7662 // [cspear@comreal.com](mailto:cspear@comreal.com)

**Pat McBride, SIOR, Esq.**

305-619-2937 // [pmcbride@comreal.com](mailto:pmcbride@comreal.com)

**Michaela Senior**

305-497-4502 // [msenior@comreal.com](mailto:msenior@comreal.com)

p. 786.433.2380

e. [industrialteam@comreal.com](mailto:industrialteam@comreal.com)

a. 3470 NW 82nd Avenue, Suite 605, Doral, FL 33122



Disclosure: All information provided herein is obtained from sources that we believe to be reliable, but has not been verified for accuracy or completeness. Any reliance on this information is solely at your own risk. Terms and conditions or change in price are subject to change without notice.