



# 13001

NW 38th Avenue  
Opa Locka, FL 33054



## FAROPOINT DOUGLAS INDUSTRIAL HUB

**+/- 15,000 – 31,780 SF**

Available for Lease

**Edison Vasquez, SIOR, CCIM**  
evasquez@comreal.com  
(305) 401-1085

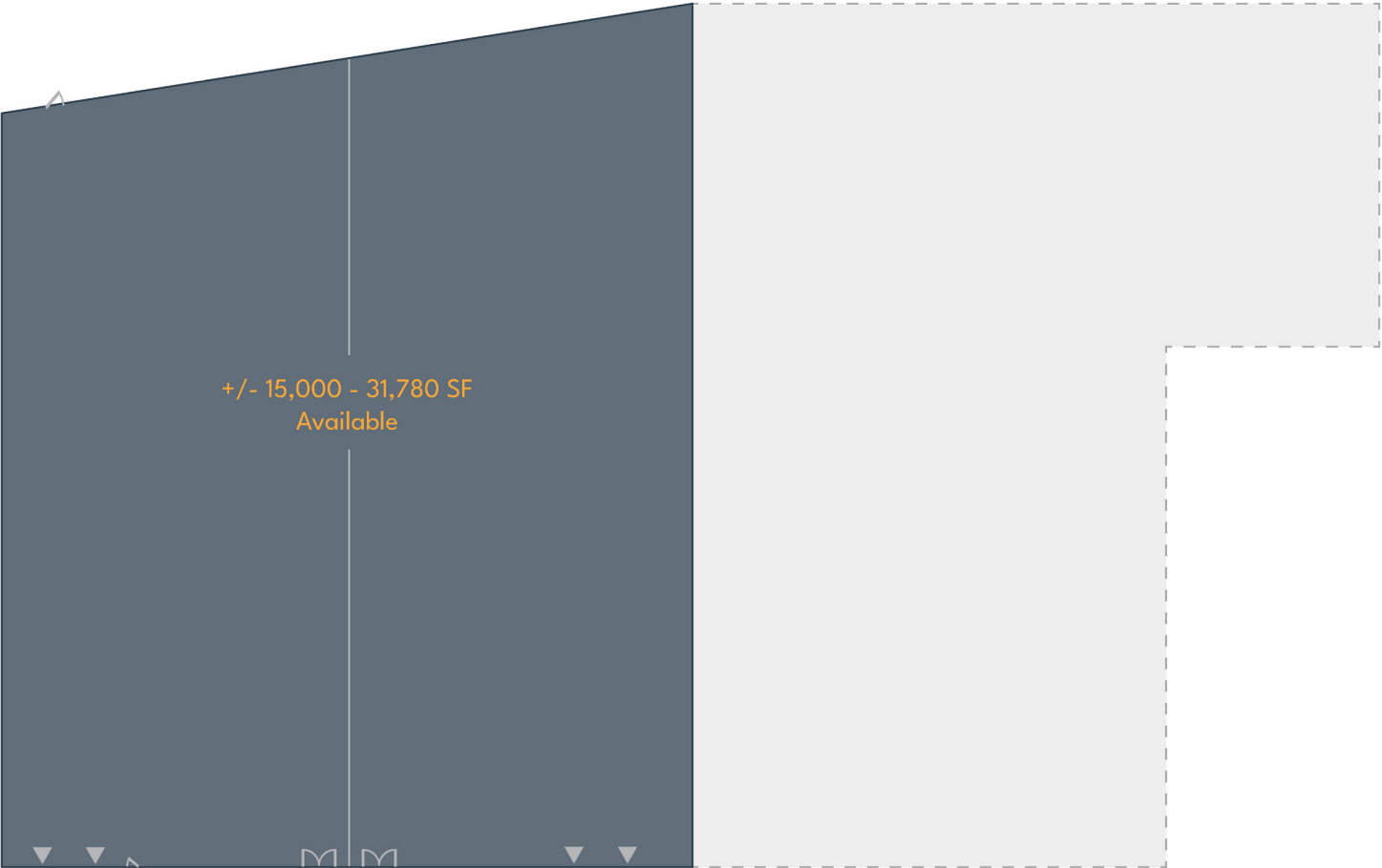
**Pat McBride, SIOR, Esq.**  
pmcbride@comreal.com  
(305) 619-2937

Owned & Managed by:



**Faropoint**

# FLOOR PLAN



## PROPERTY DESCRIPTION

Versatile warehouse space available for lease at Faropoint Douglas Industrial Hub. This facility offers exceptional flexibility, with option to lease the entire **31,780 SF** or **demise the space into two suites of +/- 15,000 SF**. **Offices are built-to-suit**, offering opportunity to **customize up to 3,000 SF** to meet specific needs.

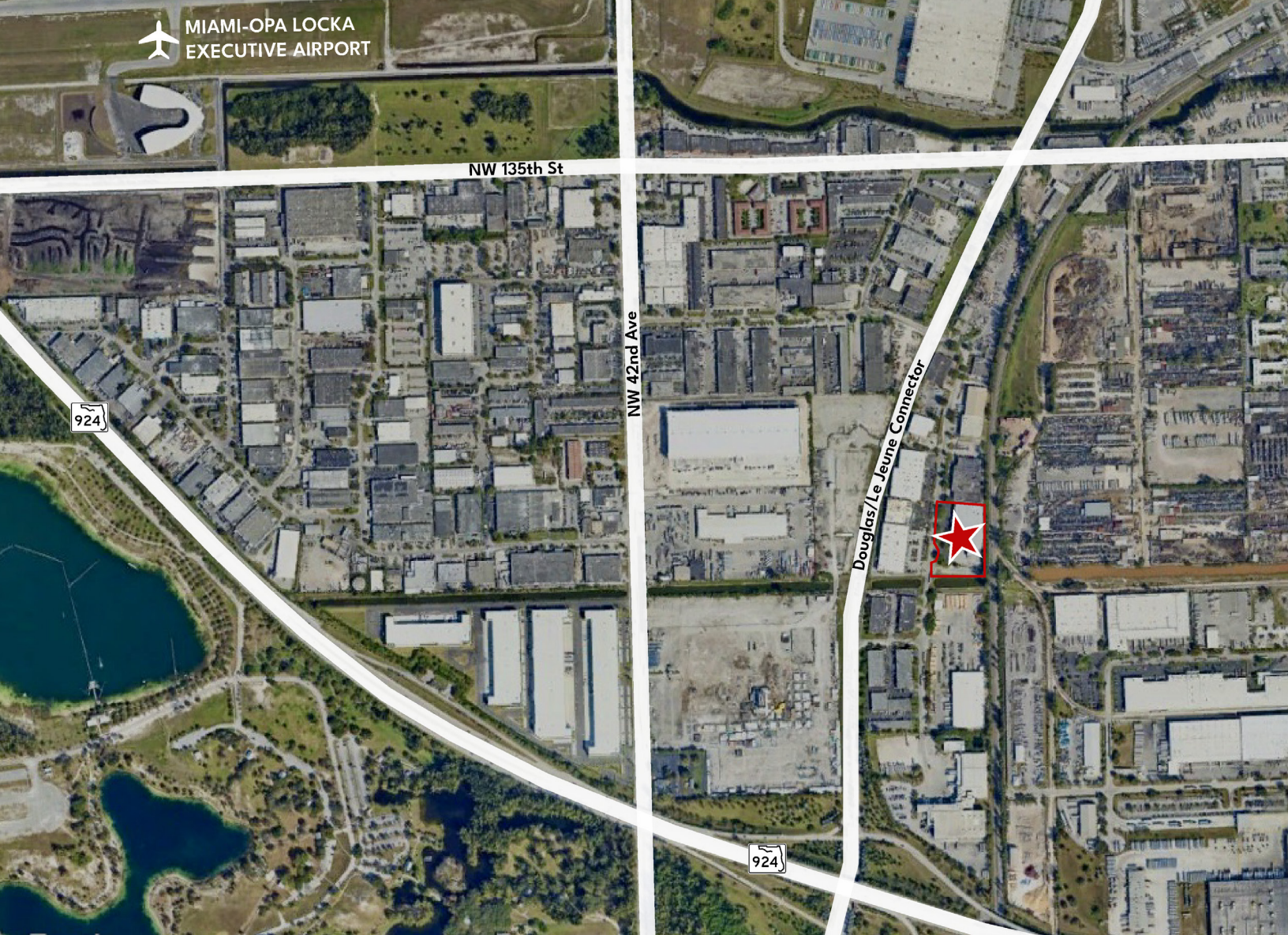
This project is professionally **owned and managed by Faropoint**, a leading national industrial landlord renowned for their responsive management and excellent tenant service. The unit features above-standard electrical capacity (**800-1200 amp, 120/208 volts**), making it uniquely suited for power-intensive operations. Built in 1981 with a **24' clear height**, this space is perfectly suited for a wide range of industries, including distribution, light manufacturing, aviation, medical supplies and many other uses.

	Option A	Option B
Total Size:	+/- 15,000 SF	+/- 31,780 SF
Office Size:	+/- 1,500 SF	+/- 3,000 SF
Clear Height:	24' clear	24' clear
Dock Positions:	2	4





MIAMI-OPA LOCKA  
EXECUTIVE AIRPORT



## PROPERTY LOCATION

Inside LeJeune Douglas Industrial Park. The Location offers immediate access to Gratigny Expressway. This provides a seamless connection to South Florida's most critical transport arteries.

- To the West, rapid access to Palmetto Expressway, I-75 and Florida's Turnpike
- To the East, connecting with I-95 providing a fast route to Downtown Miami, Port Miami and Miami Beach



Owned and Managed by:



For Leasing Inquiries, Contact:

**Edison Vasquez, SIOR, CCIM**  
evasquez@comreal.com  
(305) 401-1085

**Pat McBride, SIOR, Esq.**  
pmcbride@comreal.com  
(305) 619-2937

**ComReal**

3470 NW 82nd Ave, Suite 605  
Doral, FL 33122

Disclosure: All information provided herein is obtained from sources that we believe to be reliable, but has not been verified for accuracy or completeness. Any reliance on this information is solely at your own risk. Terms and conditions or change in price are subject to change without notice.