



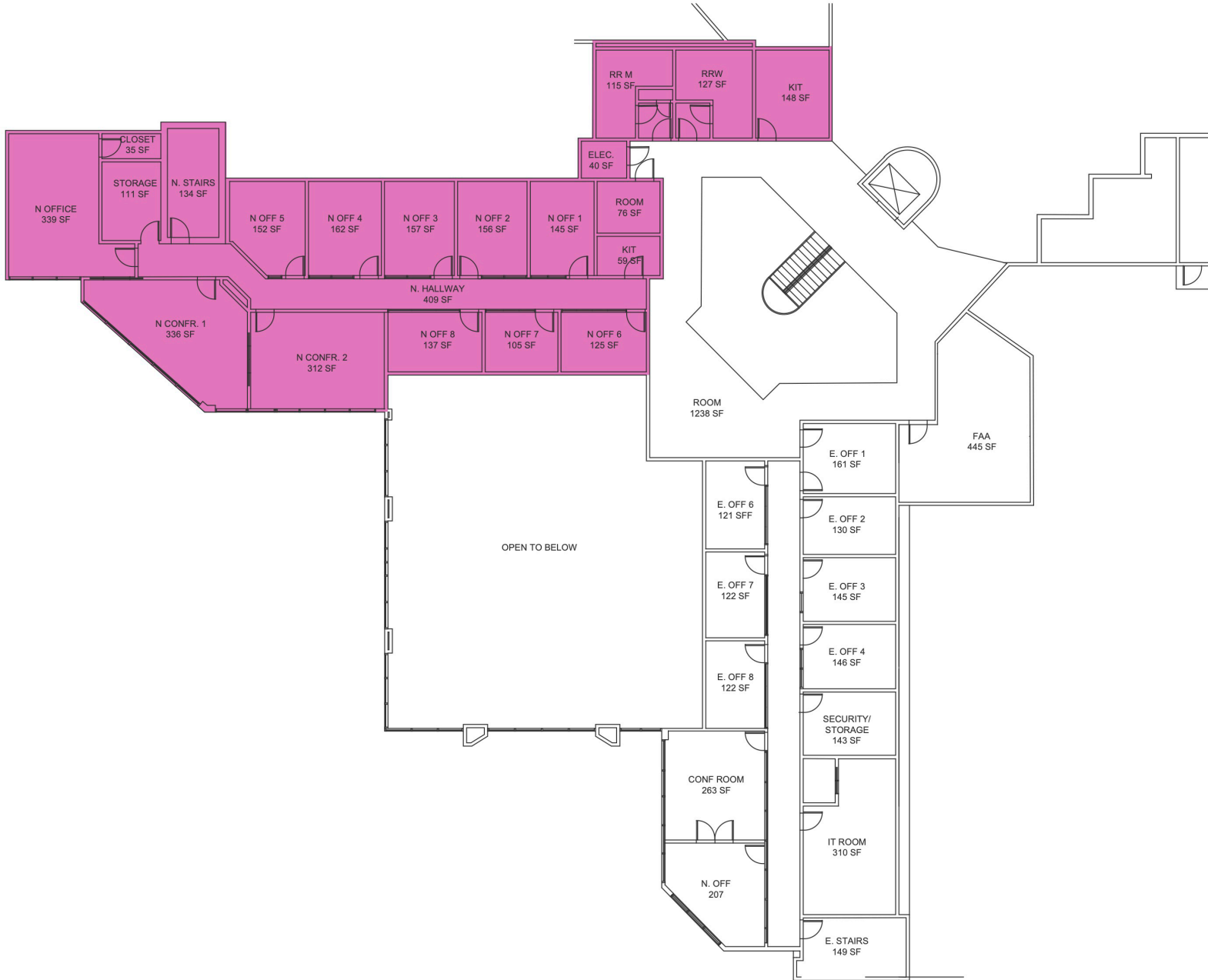
OFFICE SPACE FOR LEASE INSIDE AMERICAS' GATEWAY PARK

+/- 4,187 SF Available

180-degree views of The Fingerlakes

Edison Vasquez, CCIM
evasquez@comreal.com
(305) 401-1085

Industrial Team
industrialteam@comreal.com
(786) 433-2380



PROPERTY OVERVIEW

- +/- 4,187 SF Available (on 2nd floor)
- **Ample Parking**
- Located **within The City of Doral** which is home to the Miami Herald, Carnival Cruise Lines, US Southern Command and the Trump National Doral
- Adjacent neighbor is WFOR-TV CBS
- Minutes away from **Florida's Turnpike, Dolphin and Palmetto Expressways** and **Miami International Airport**